

# **Windows System Driver Installation Tutorial**



## CONTENT

---

- 01 USB connection to the computer to install the driver
- 02 Where can I found the installed drivers?
- 03 Manual driver installation tutorial
- 04 How to view the printer port number?
- 05 How to change the printer port number?



# Installation Instructions

## Pre-installation work:

1. It is recommended that the printer be turned on and connected to the computer using a data cable
2. Close the computer antivirus software.

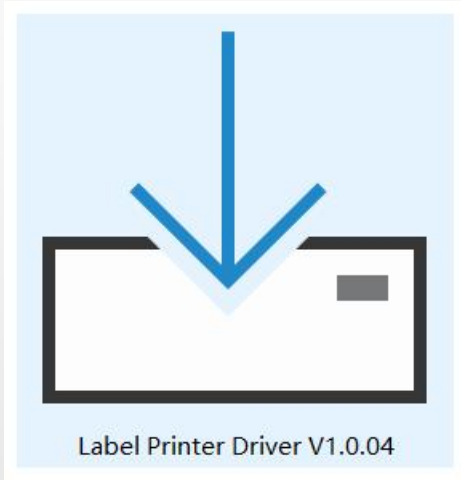
## Other Notes:

1. When you install the driver for the first time, the next time you access to other Clabel printers, the computer will automatically generate the corresponding model of the printer driver, you do not need to manually install.
2. This driver is not applicable to CT230B, CT230D and CT330D HD models.
3. Note: The printer models shown here are only for demonstration purposes. If you purchased other printers, it is the same installation method.



## The process of download the driver

Log on to <https://ga.ctaiot.com/>  
Follow the website guidelines to download

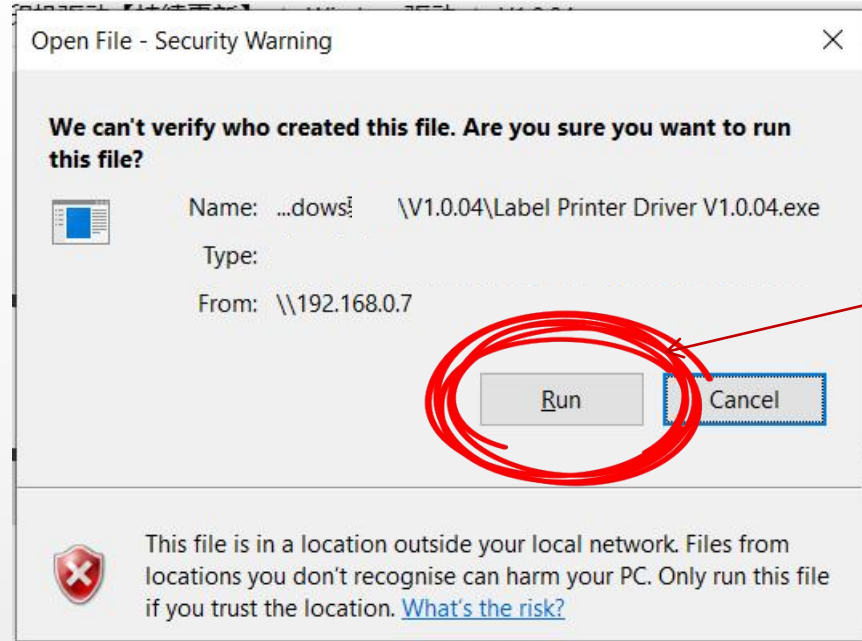


USB Connection  
to Computer  
Install the Driver



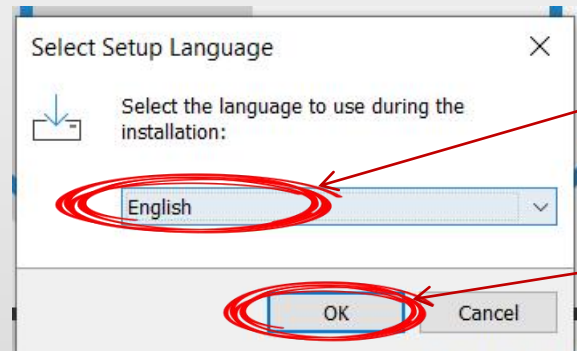
# Installation of Driver-USB

01



Click on "Run"

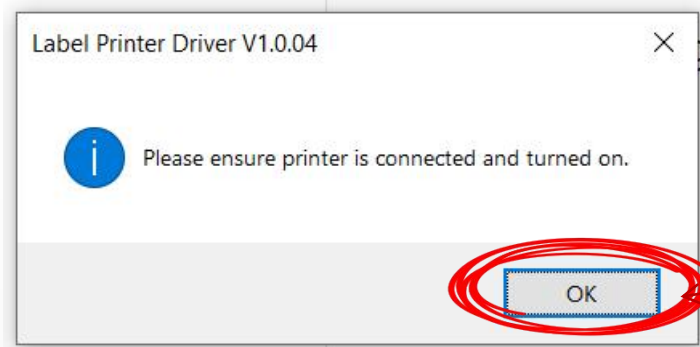
02



1. Select Driver Language

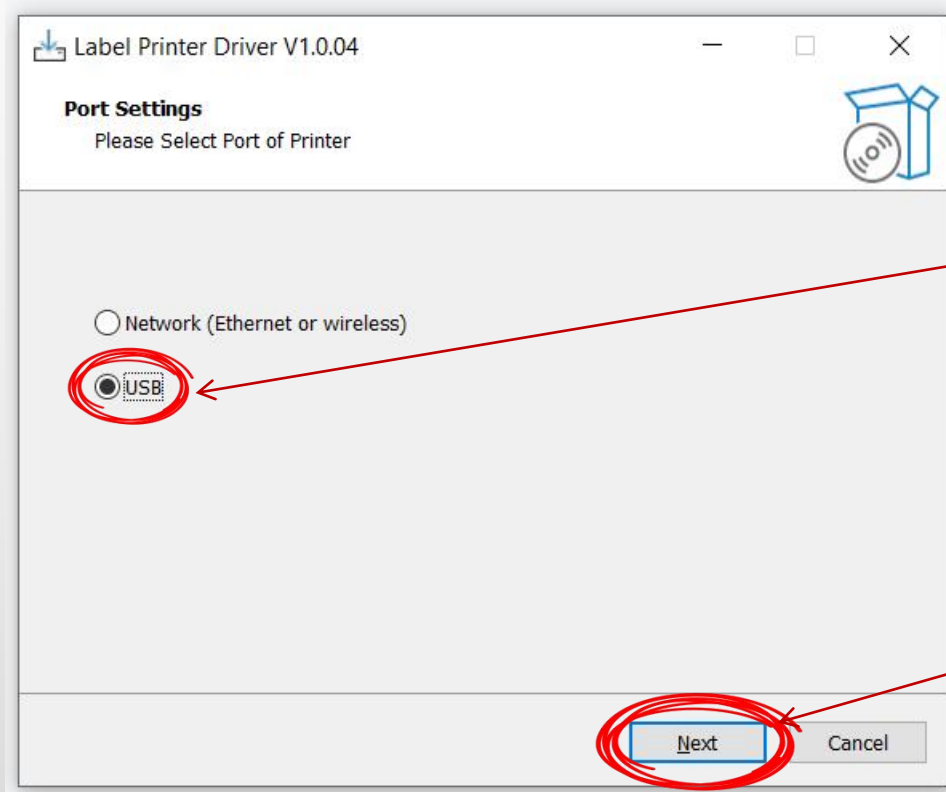
2. Click "OK"

03



Click "OK"

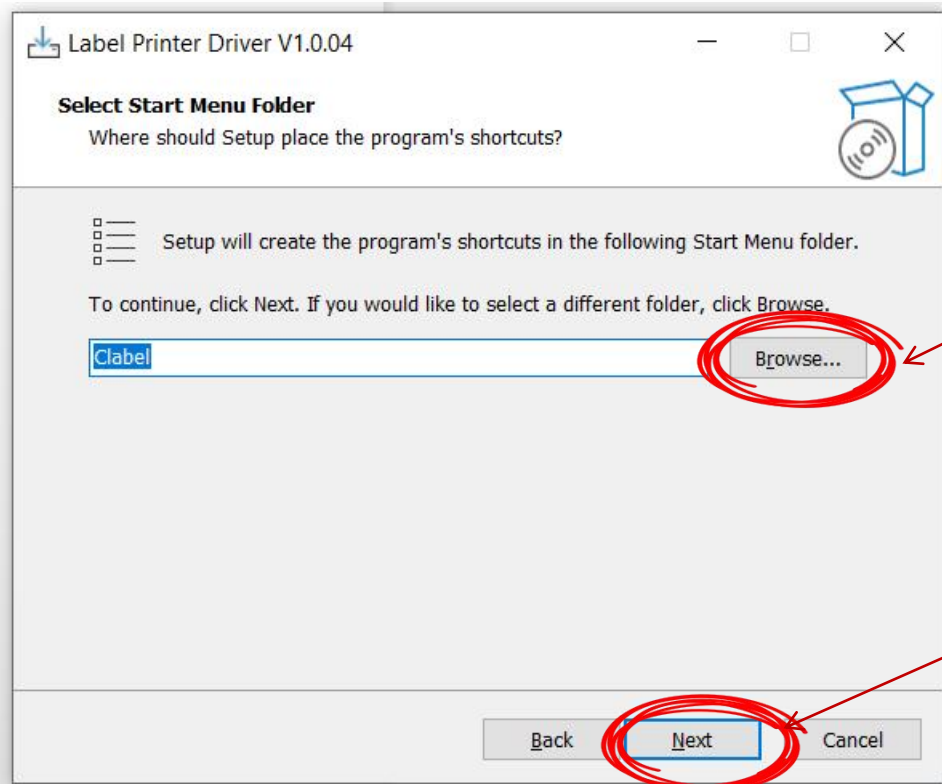
04



Check the "USB" box first.

Click "Next" again.

05

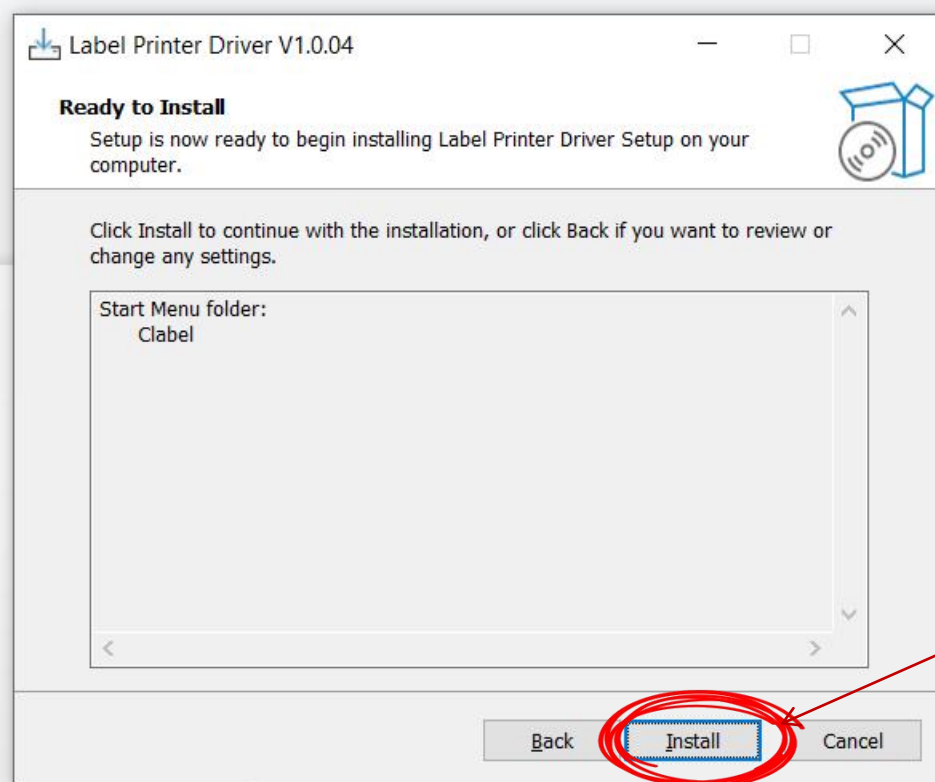


1. Select the installation location, it is recommended to leave it unselected by default

2. Click on "Next"

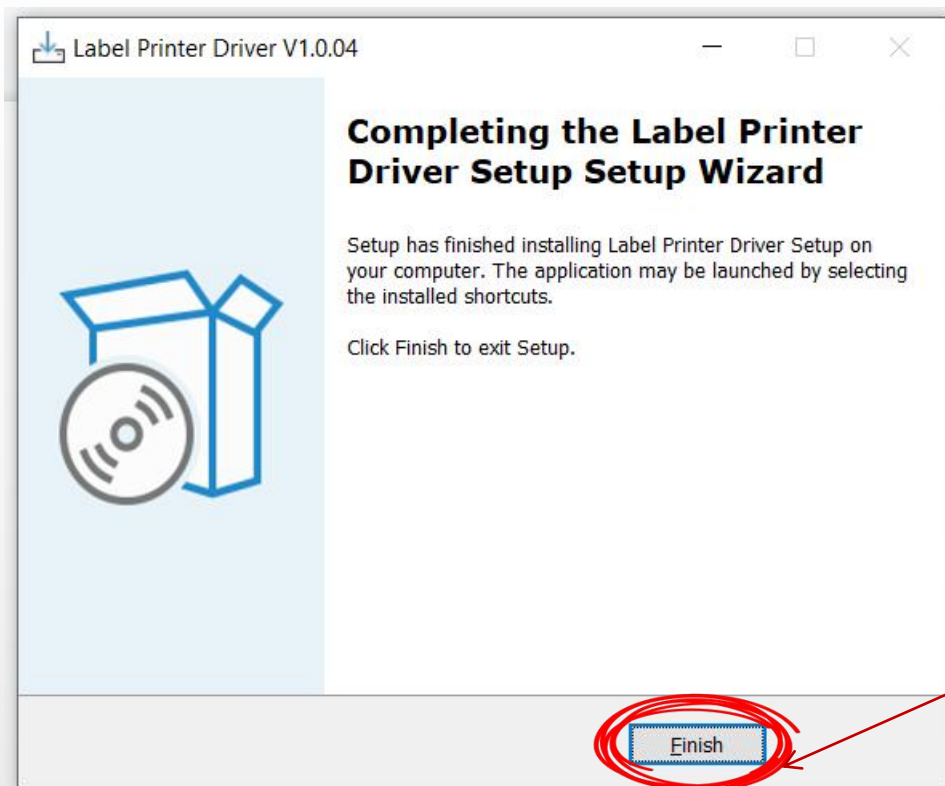


06



Click on "Install"

07



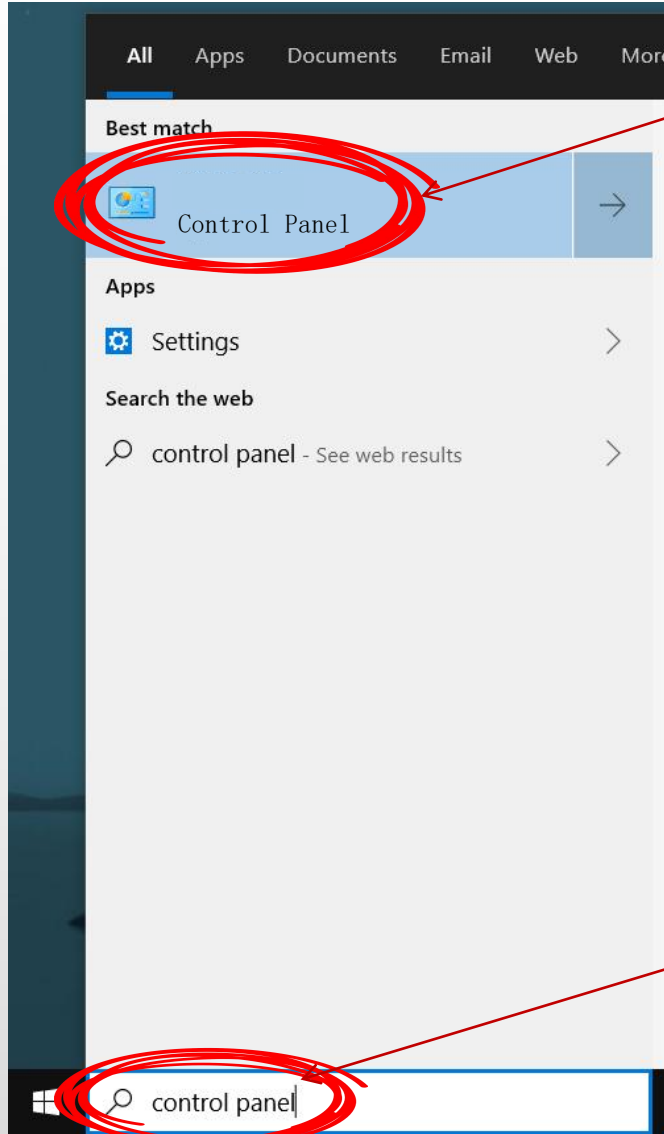
Installation is succeeded,  
click "Finish".

Where are the  
installed drivers?

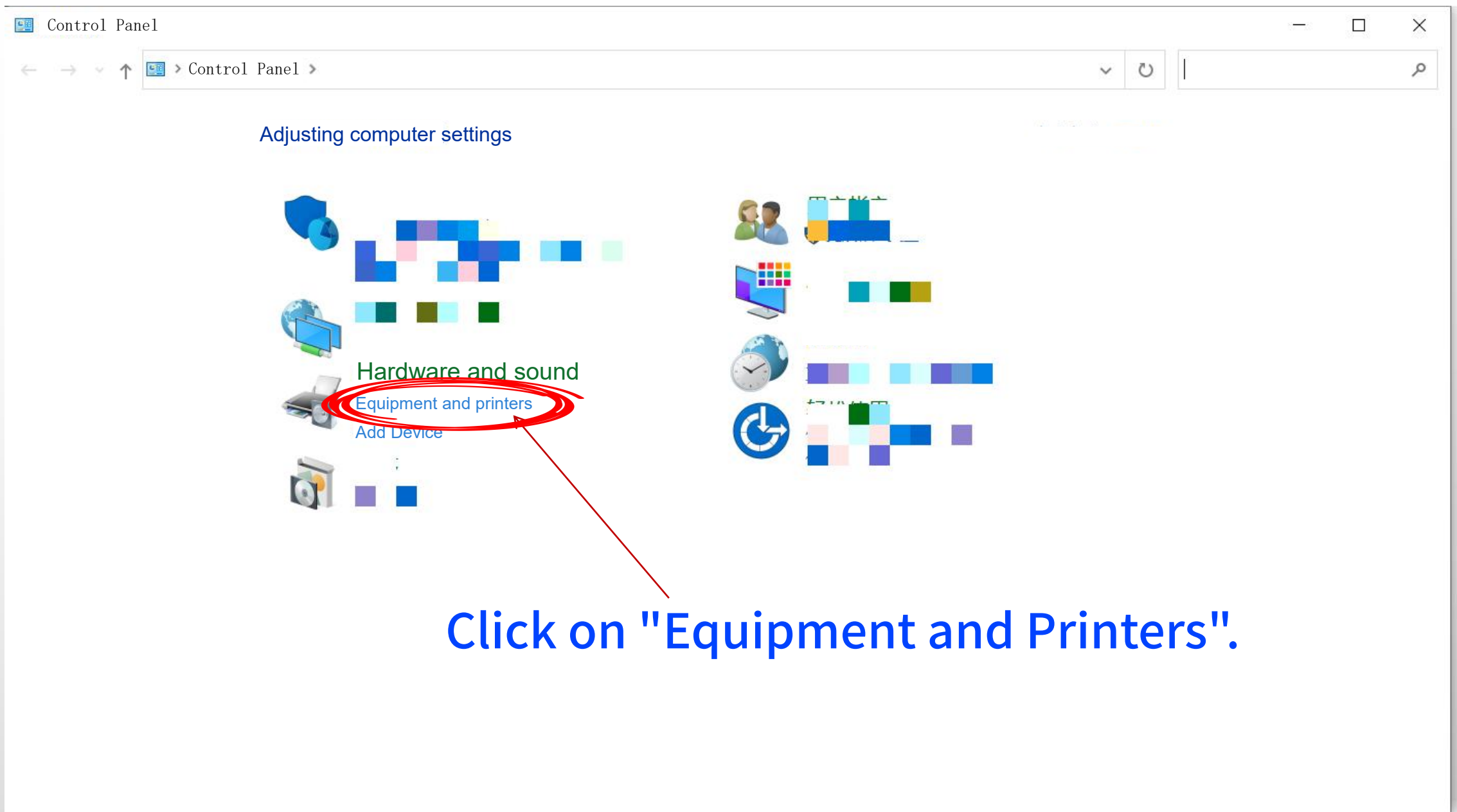


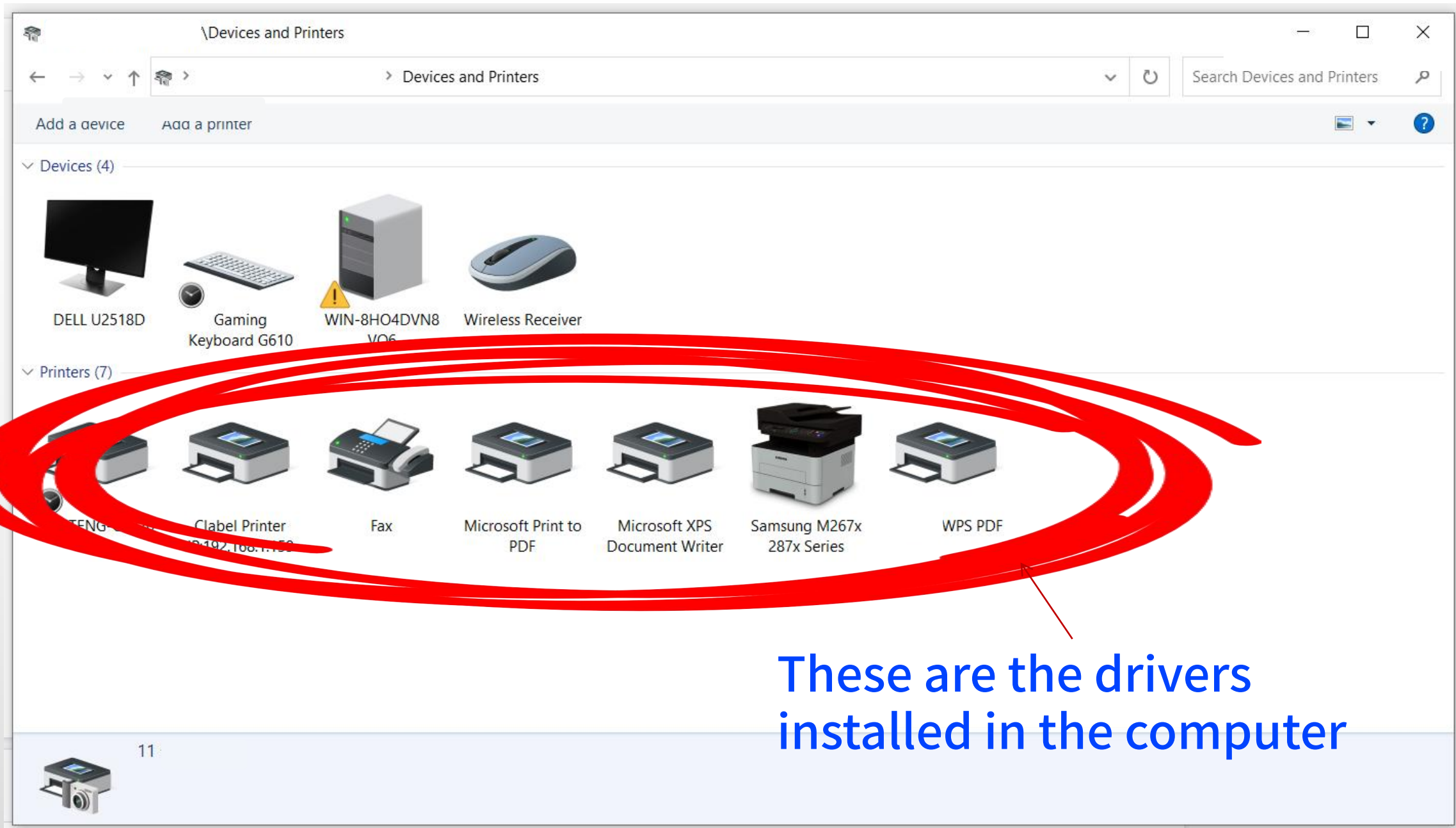
# Where are the installed drivers?

2. Where are the installed drivers?



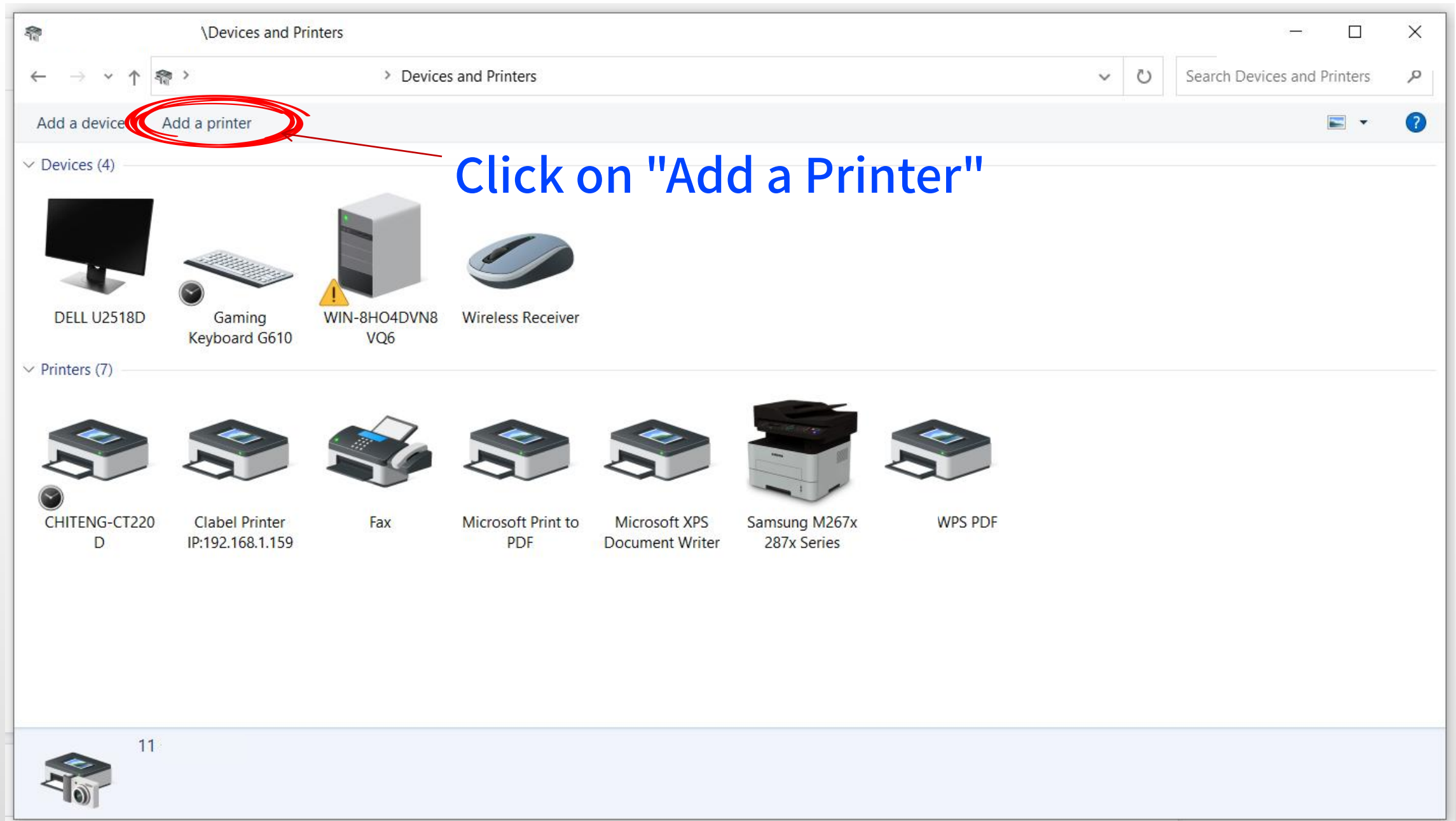
1. Enter "Control Panel" in the search box.



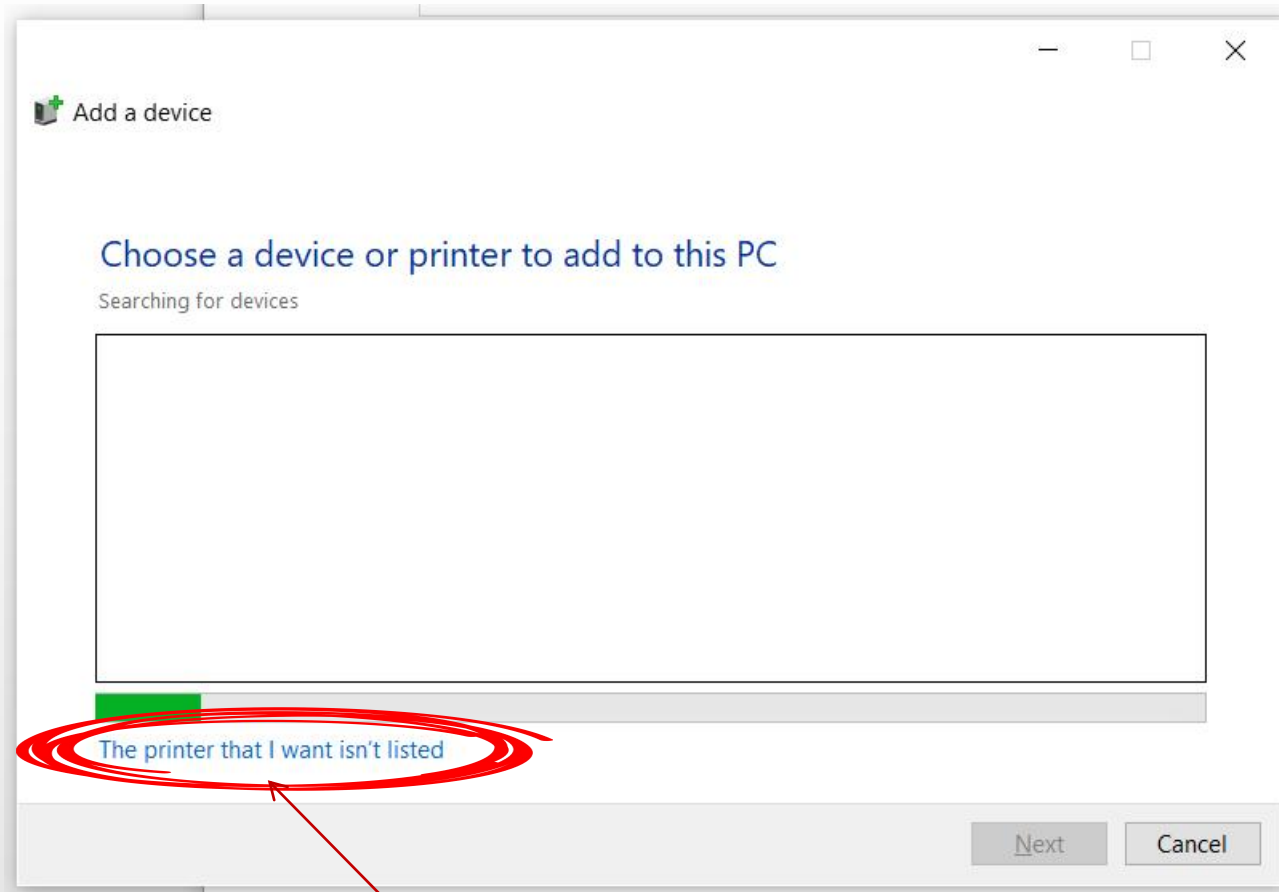


# Manual Driver Installation Tutorial

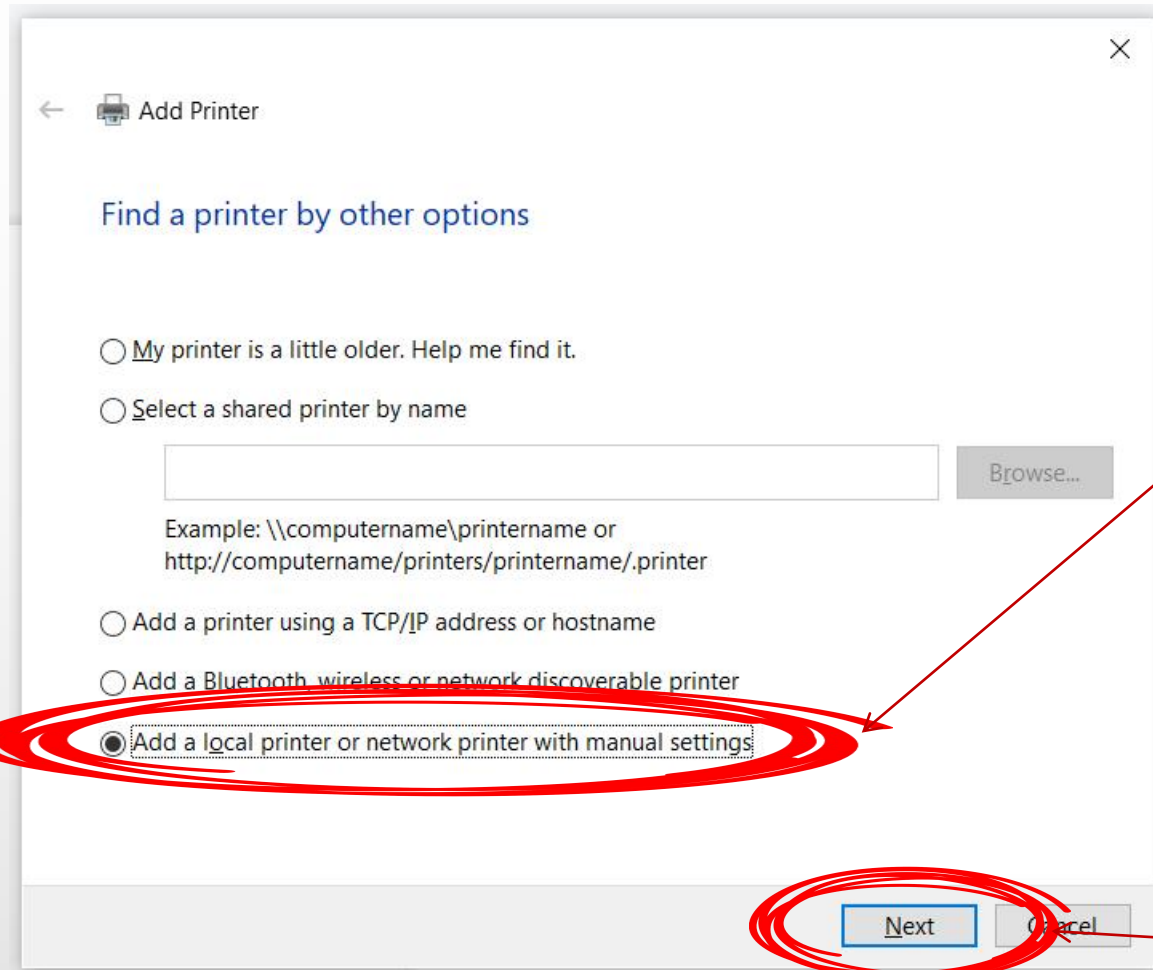
Click on "Add a Printer"





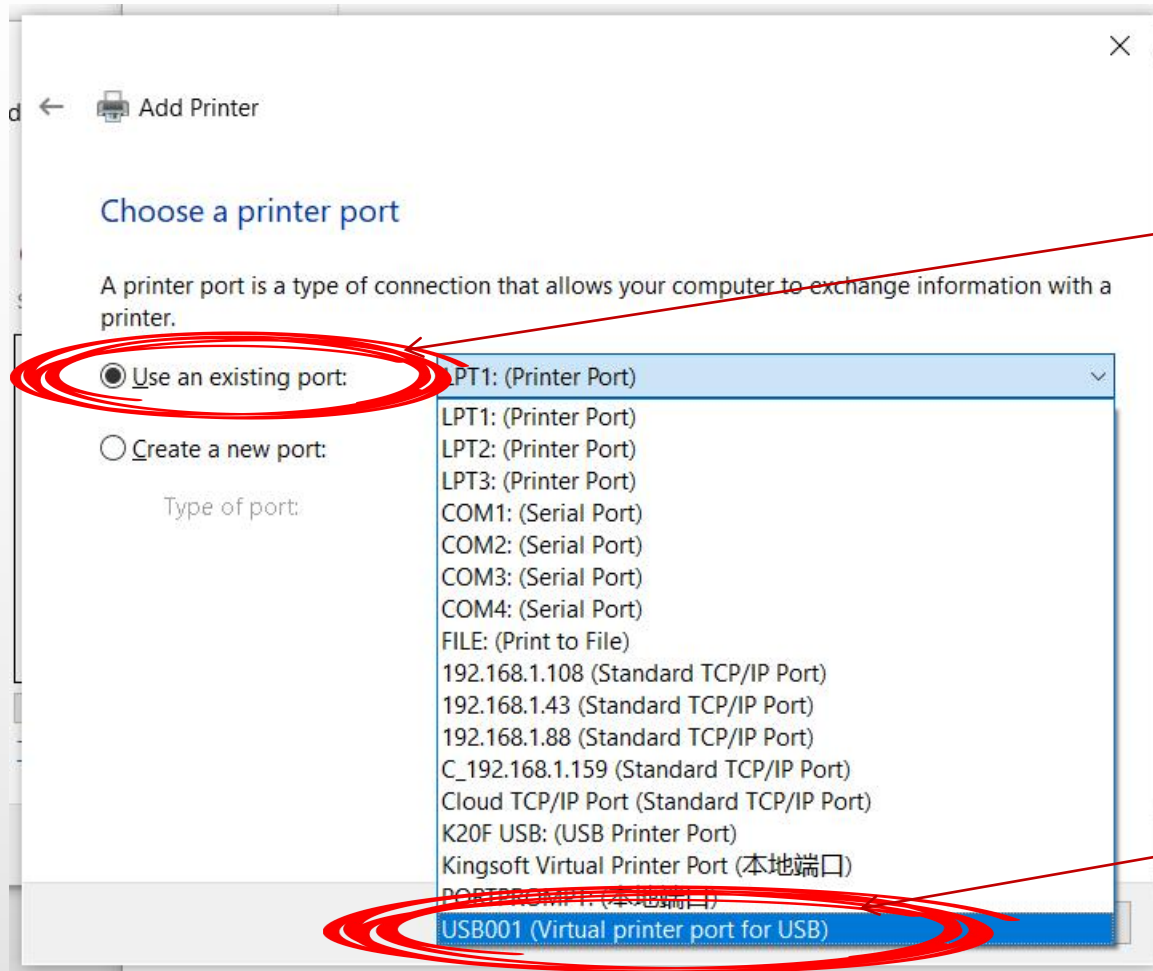


Click on "The printer that I want isn't listed?".




1. Click on  
"Add a local printer or  
network printer with  
manual settings"

2. Click on "Next"



1. Check the "Use an existing port" box.

2. Select the correct USB port  
If both USB001 and USB002 exist  
Select the port with the largest value

 Add Printer

Choose a printer port

A printer port is a type of connection that allows your computer to exchange information with a printer.

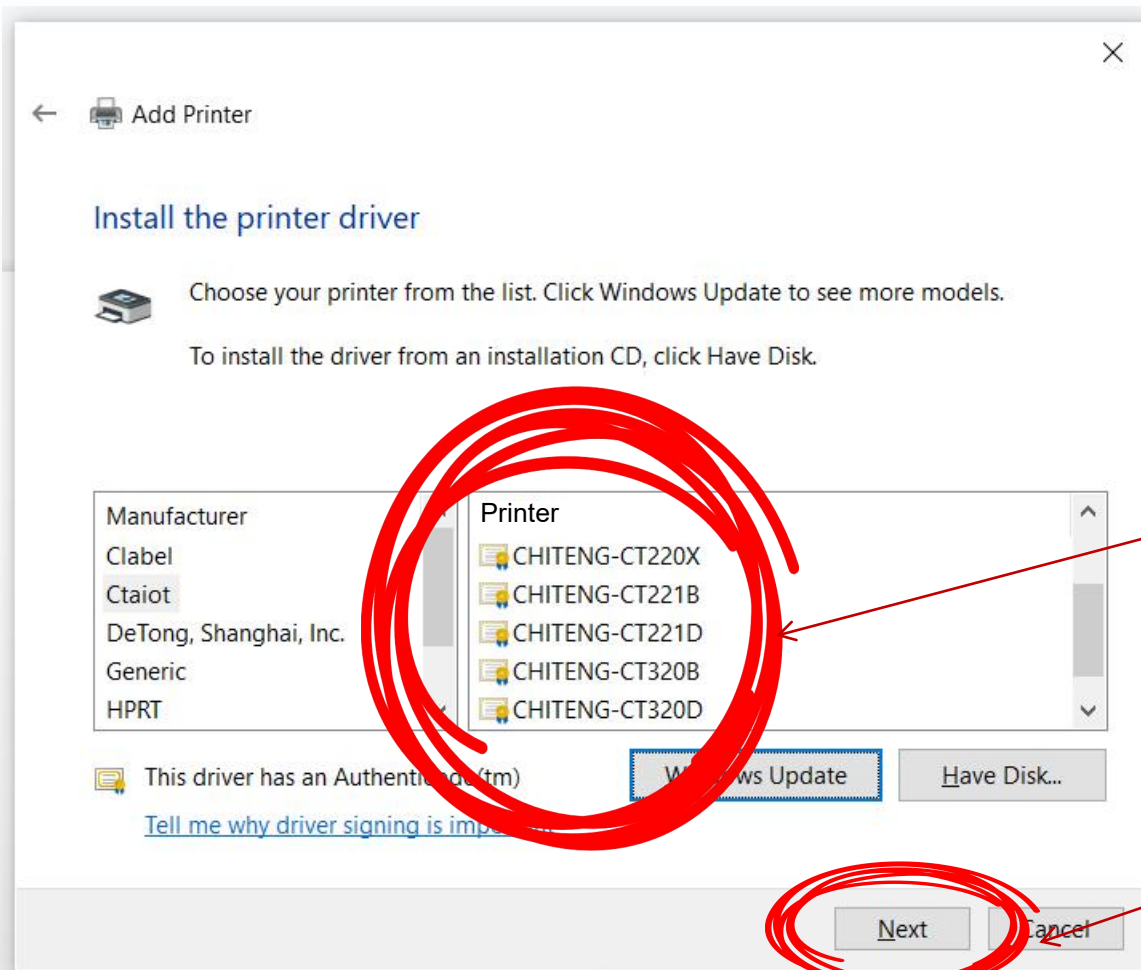
☒ Use an existing port: USB001 (Virtual printer port for USB) ▾

☐ Create a new port:

Type of port: Local Port ▾

Next Cancel

Click on "Next"

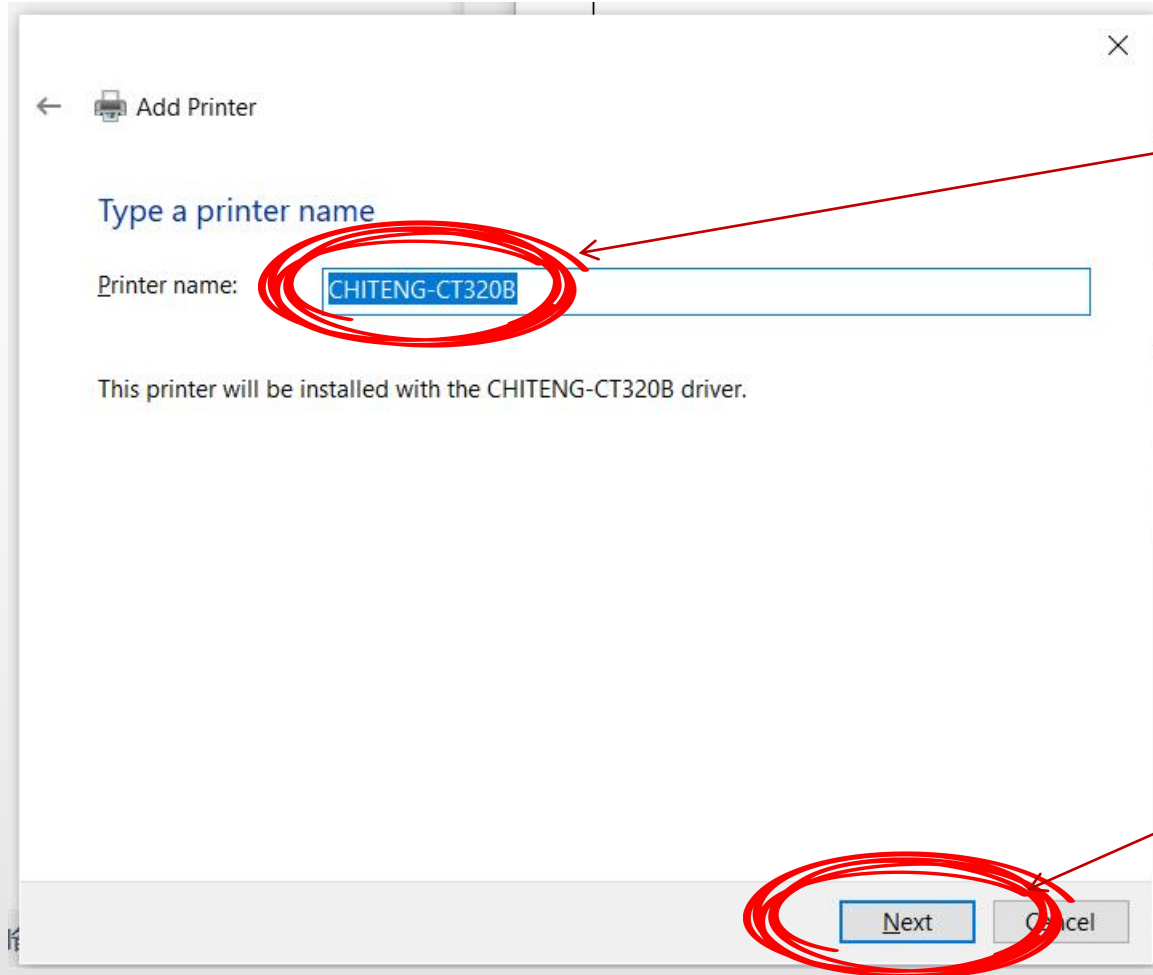


1. Select the printer model to be installed.

2. Click on "Next".

1. A new name can be given to the printer, if necessary.

2. Click on "Next".



← Add Printer

### Printer Sharing

If you want to share this printer, you must provide a share name. You can use the suggested name or type a new one. The share name will be visible to other network users.

☒ Do not share this printer

☐ Share this printer so that others on your network can find and use it

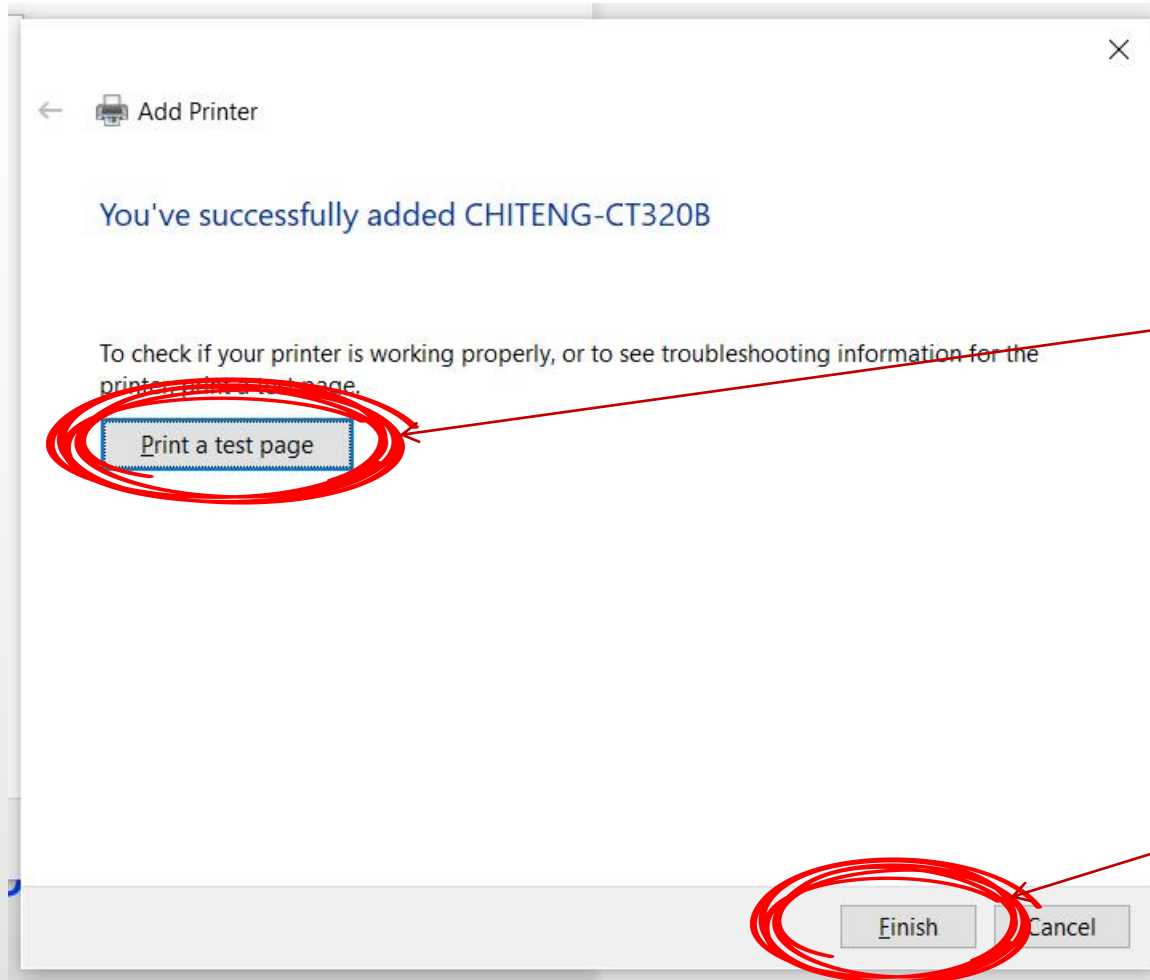
Share name:

Location:

Comment:

1. Check the "Do not share this printer" box.

2. Click on "Next".

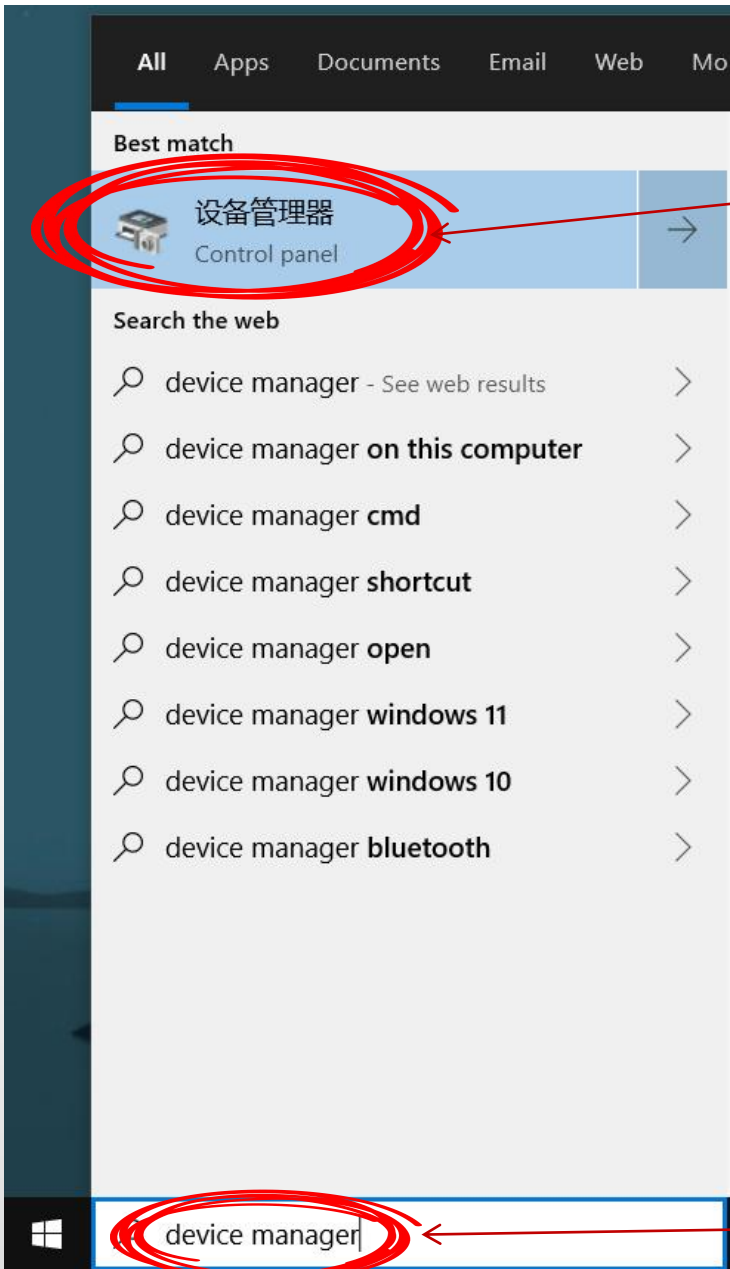


1. Click "Print a test page".  
If the printer responds that the driver was installed successfully, if not, the port may be selected incorrectly, you can modify the port and retry.

2. At the end of the installation, click "Finish".

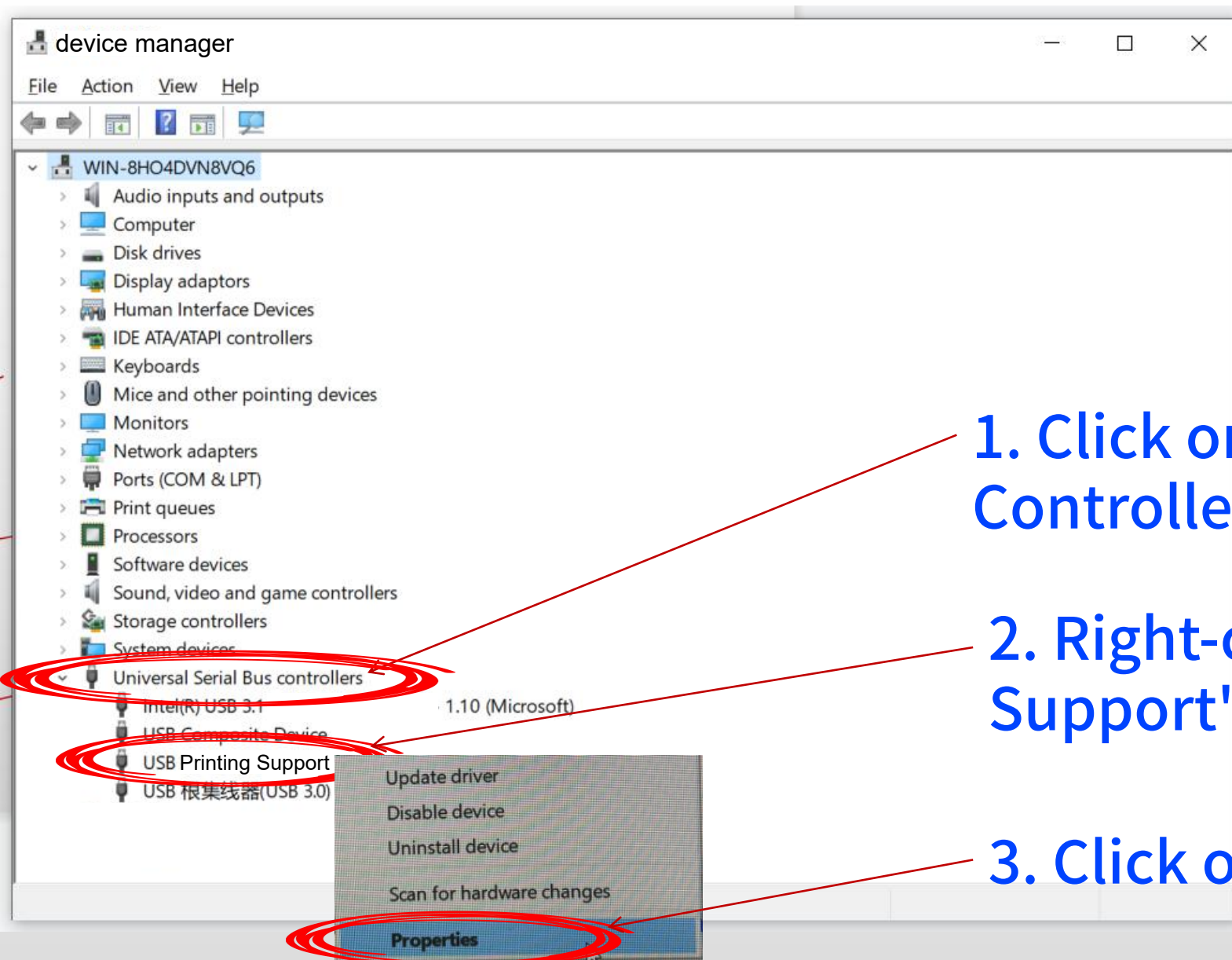


# How to View Printer Port



2. Click on "Control panel"

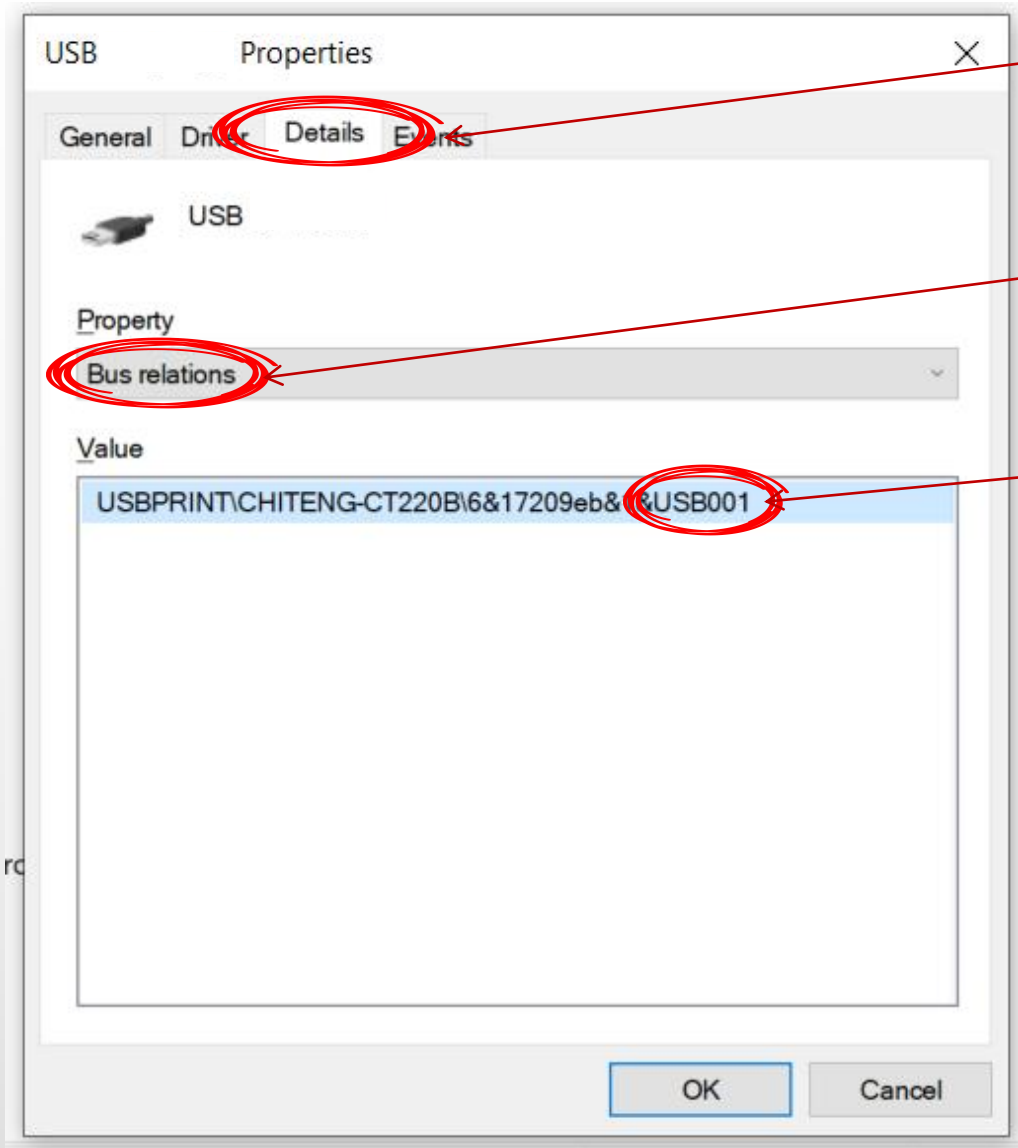
1. Search for "device manager"



1. Click on "Universal Serial Bus Controller".

2. Right-click on "USB Print Support".

3. Click on "Properties"

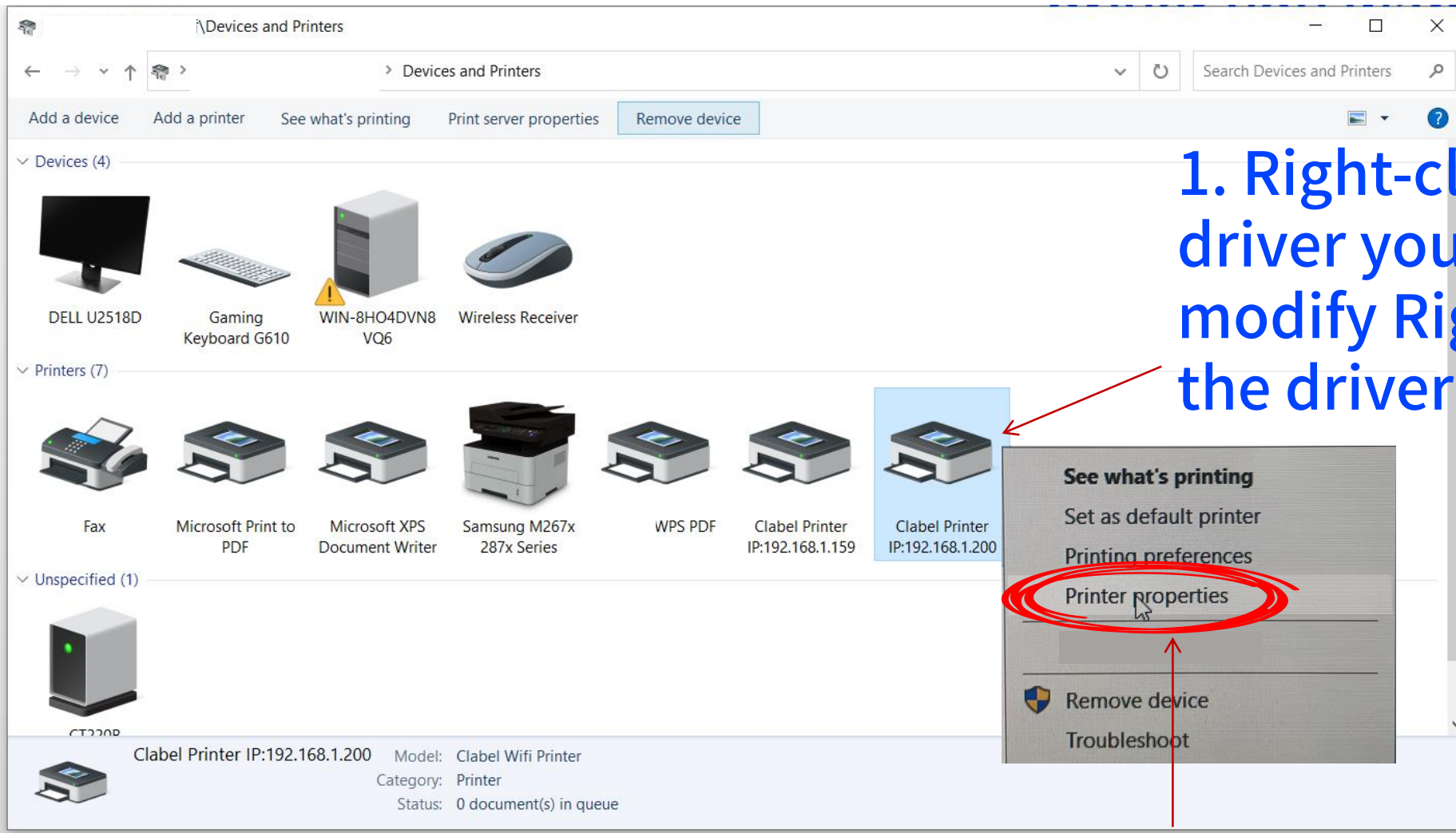


1. Click on "Details"

2. Select "Bus relationship".

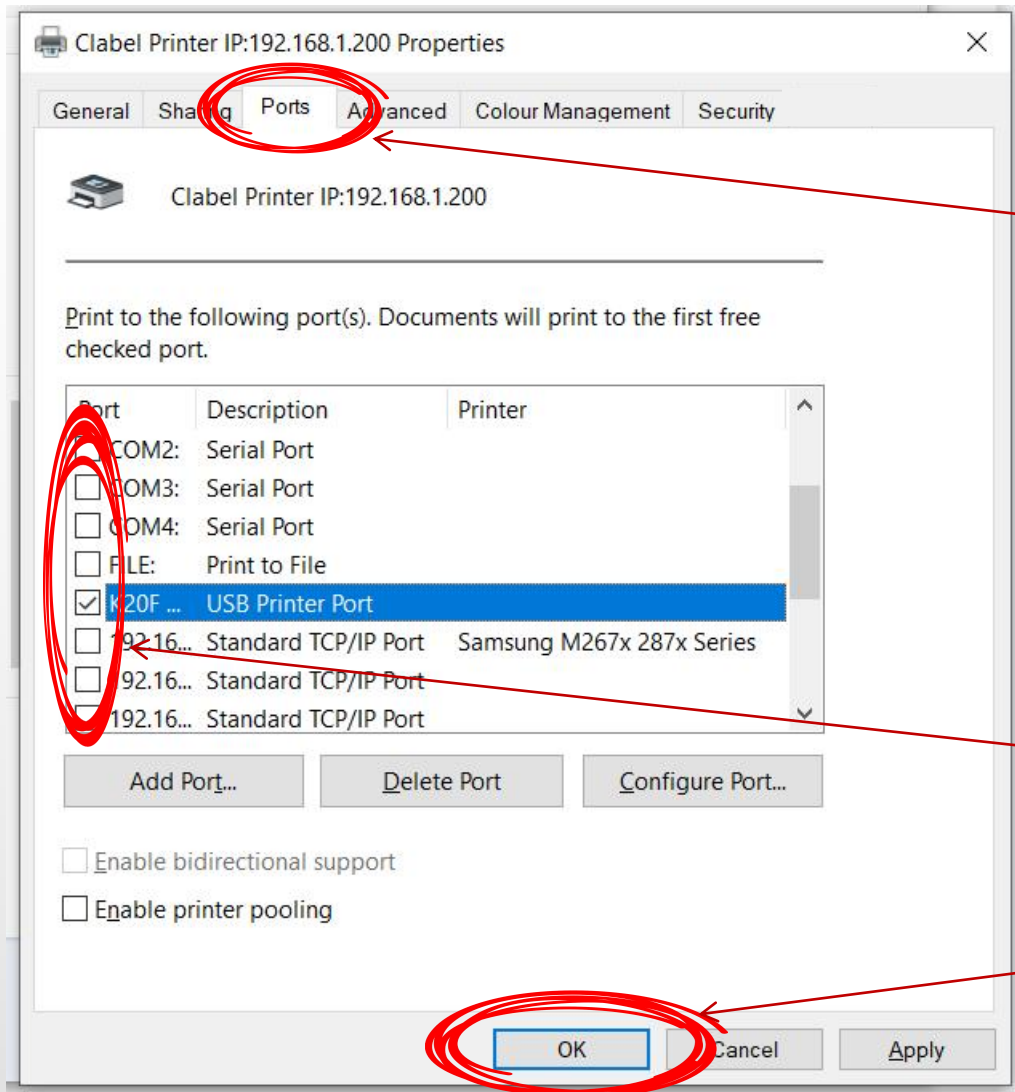
3. You can see that the port number of the printer is USB001.

# How to Modify Printer Port Number



1. Right-click on the driver you want to modify Right click on the driver

2. Select "Printer Properties".



1. Click on "Ports"

2. Check the correct port

3. Click OK to complete the port modification.

THANK YOU  
FOR LISTENING